



KMT3C/SMYD2 mouse mAb

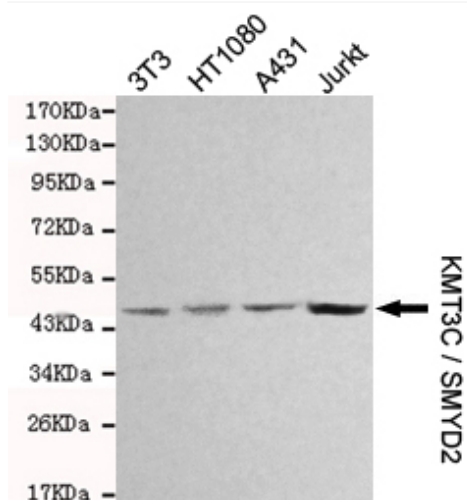
Catalog No	YP-Ab-01064
Isotype	IgG
Reactivity	Human;Mouse
Applications	WB
Gene Name	smyd2
Protein Name	
Immunogen	Purified recombinant human KMT3C / SMYD2 protein fragments expressed in E.coli.
Specificity	This antibody detects endogenous levels of KMT3C / SMYD2 and does not cross-react with related proteins.
Formulation	Liquid in PBS containing 50% glycerol, 0.5% BSA and 0.02% sodium azide.
Source	Monoclonal, Mouse
Purification	The antibody was affinity-purified from mouse ascites by affinity-chromatography using epitope-specific immunogen.
Dilution	wb 1:1000
Concentration	1 mg/ml
Purity	≥90%
Storage Stability	-20°C/1 year
Synonyms	Histone methyltransferase SMYD2;HSKM B;HSKM-B;HSKMB;KMT3C;Lysine N-methyltransferase 3C; MGC119305;N lysine methyltransferase SMYD2;N-lysine methyltransferase SMYD2;SET and MYND domain containing 2;SET and MYND domain containing protein 2;SET and MYND domain-containing protein 2;Smyd2;SMYD2_HUMAN;Zinc finger MYND domain containing 14;ZMYND14.
Observed Band	50kD
Cell Pathway	Cytoplasm, cytosol . Nucleus .
Tissue Specificity	Brain,Colon,Liver cancer,Testis,
Function	similarity:Contains 1 MYND-type zinc finger.,similarity:Contains 1 SET domain.,
Background	SET and MYND domain containing 2(SMYD2) Homo sapiens SET domain-containing proteins, such as SMYD2, catalyze lysine methylation (Brown et al., 2006 [PubMed 16805913]).[supplied by OMIM, Nov 2008],
matters needing attention	Avoid repeated freezing and thawing!



Usage suggestions

This product can be used in immunological reaction related experiments. For more information, please consult technical personnel.

Products Images



Western blot detection of KMT3C / SMYD2 in 3T3,HT1080,A431 and Jurkat cell lysates and using KMT3C / SMYD2 mouse mAb (1:1000 diluted). Predicted band size: 50KDa.Observed band size: 50KDa.